

Chapter 1. Installation.

1.1. Safety measures

- 1.- Never place the equipment next to hot sources.
- 2.- Never undergo the equipment to temperatures that exceed the level of operation of the device.
- 3.- Do not expose the equipment to dripping or splashing.
- 4.- Do not place objects filled with liquids, such as vases, on the equipment.
- 5.- Respect ventilation slots of this equipment. Avoid covering them with any object.
- 6.- Keep clean and without obstacles a minimum radius of 40 cm around this equipment.
- 7.- Avoid locations with possibilities of spilling liquids on the inside of the device, and with important changes of temperature.
- 8.- Never open the equipment yourself due to electric risk. In case of problems, go always to qualified technicians.
- 9.- Never, under no circumstances, open the equipment connected to the electrical net.
- 10.- During the handling it is better to disconnect the equipment of the electrical net.
- 11.- Respect the electricity security rules during the assembling. Use materials that obey the current law.
- 12.- The connecting plug must be accessible in a fast and simple way to have a fast disconnection.
- 13.- Never touch the plug with wet hands. Also, disconnect always the device before handling the connections..
- 14.- Never put any heavy object over the device, as it could get damaged.
- 15.- If the equipment is going to remain some time without use, it is recommendable to disconnect it from the electrical net.
- 16.- The repairman and the maintenance of the equipment must be done by TV and radio specialist technicians.

1.2. Box Content



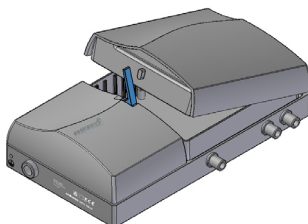
BKV 45/30 - BKV 45/65



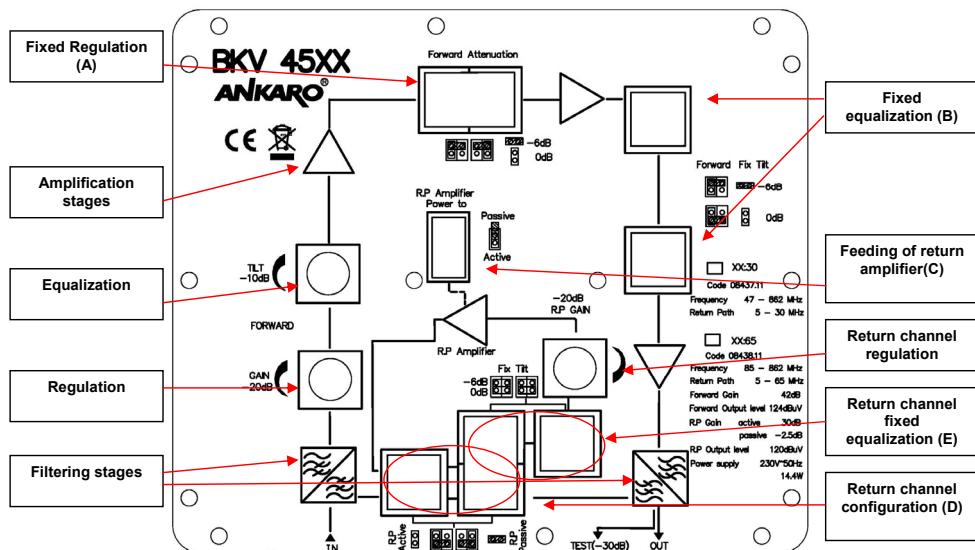
User's Guide

1.3. Description and Connections

This family of broadband amplifiers has a configurable return path that can be active or passive. The difference between amplifiers is that BKV 45/30 models have a 5-30 MHz return path and BKV 45/65 models have a 5-65 MHz one. These amplifiers have aluminium housing with a removable cover that allows the installer to configure the amplifier according to the needs of the installation.



Inside the equipment there is a simplified sketch of the different stages of the amplifier and also it is given the access to configure the different options that the amplifier offers.



The gain of BKV 45/XX amplifier is 42dB for terrestrial band and 30dB for return path (active). They also incorporate a margin of regulation of 20 dB and an equalization of 10 dB in the terrestrial band and they incorporate a regulation margin of 20 dB in the return path. In the terrestrial band exists also the possibility of configuring a fixed regulation of 6dB and a fixed equalization of 6dB by the means of jumpers. The different positions of the jumpers for regulating and equalizing the terrestrial band are specified in the following tables:

Regulation (A)	-6dB	0dB
Jumpers position		

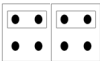
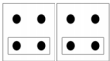
Equalization (B)	-6dB	0dB
Jumpers position		

The configuration of the return path is made through jumpers, in one of them it is configured the power to return path amplifier or no power to return path amplifier and in the other if the channel is active or passive. The two possible configurations are: *power to return path amplifier – active channel* and *without power to return path amplifier – passive channel*.

The following table specifies which the positions of the jumpers are in order to get a passive or active return path:

Return path Stage	Power to return path amplifier (C)	Return path Configuration (D)
Active		
Passive		

In the return channel we can also make a fixed equalization of 6dB by the means of jumpers. The different positions of the jumpers for equalizing or not equalizing the return channel are shown in the following table:

Return channel fixed equalization (E)	-6dB	0dB
Jumpers position		

The equipment is provided with a wall support with wedges and screws included.

The steps to make a correct installation are the followings:

- Bring down the fastening device. The equipment will be now loosed and it will be possible to separate the support from the equipment.
- Fix the support to the wall with the wedged and screws provided.
- Introduce the equipment again in the wall support once it is installed.
- Bring up the fastening device to adjust the equipment to the support.



BKV 45/30 - BKV 45/65

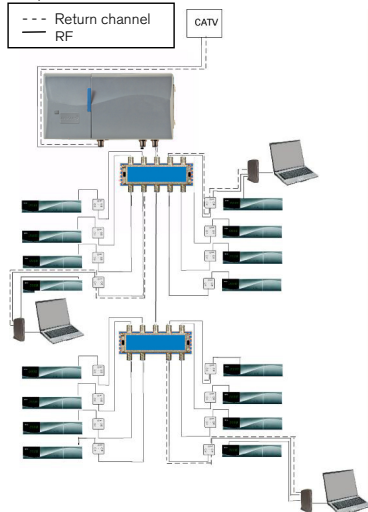


- 1 IN: Input terrestrial signal 5-862 MHz (*)
- 2 OUTPUT TEST: Output test (-30dB)
- 3 OUT: Output Terrestrial signal 5-862 MHz (*)
- 4 AC IN: Power cord (230V AC, 50Hz)

(*) Nota: In model BKV 45/30 the margin of inputs and output frequencies is 47-862 MHz and the return path 5-30MHz. For model BKV 45/65 the margin of input and output frequencies is 85-862MHz and the return path 5-65MHz.

1.4. Example of installation

Example of installation



Example of a building with two dwellings with 8 outlets per dwelling. The CATV signals are distributed in each outlet.

The amplifiers allow us to equalize the signal, and this way the power difference between high and low signals can be avoided, therefore we can reach an optimal signal level in each outlet.

The amplifier allows us to configure the return path as active, this way we would be able to use any multimedia service that the provider could supply us. The return path can be 30MHz or 65MHz depending on model BKV 45/XX that we use.

Chapter 2. Technical Features

Ref.	BKV 45/30	BKV 45/65
Code	08437.11	08438.11
Nr. Inputs/ Outputs		1/1
Terr. Freq. Margin.	47-862 MHz	85-862 MHz
Terr. Gain.	42 +/- 1.5 dB	
Terr. Regulation	20 dB	
Fixed Terr. Regulation	0-6 dB	
Terr. Equalization	10 dB	
Fixed Terr. Equalization	0-6 dB	
Freq. Margin Return path	5-30 MHz	5-65 MHz
Return path Gain Active/Passive	30 dB / >-2.5	
Return path Gain Regulation	20 dB	
Fixed Return path Equalization	0-10 dB	
Output Level Max.	124 dB μ V	
Protection grade	IP 65	
Consumption	230V 50Hz, 14.4 W	
Dimensions	230 x 140 x 60 mm	

Chapter 3. Conformity Declaration

CONFORMITY DECLARATION



"WE, ANKARO, DECLARE THAT THE PRODUCTS
BKV 45/30 AND BKV 45/65
ARE IN CONFORMITY WITH FOLLOWING DIRECTIVES
Low Voltage Directive 2006/95/EC
EMC Directive 2004/108/EC"

If you wish a copy of the conformity declaration, please contact to the company